



VEGEPOLYS  
PÔLE DE COMPÉTITIVITÉ

*La + value végétale*

 **BASF**

We create chemistry



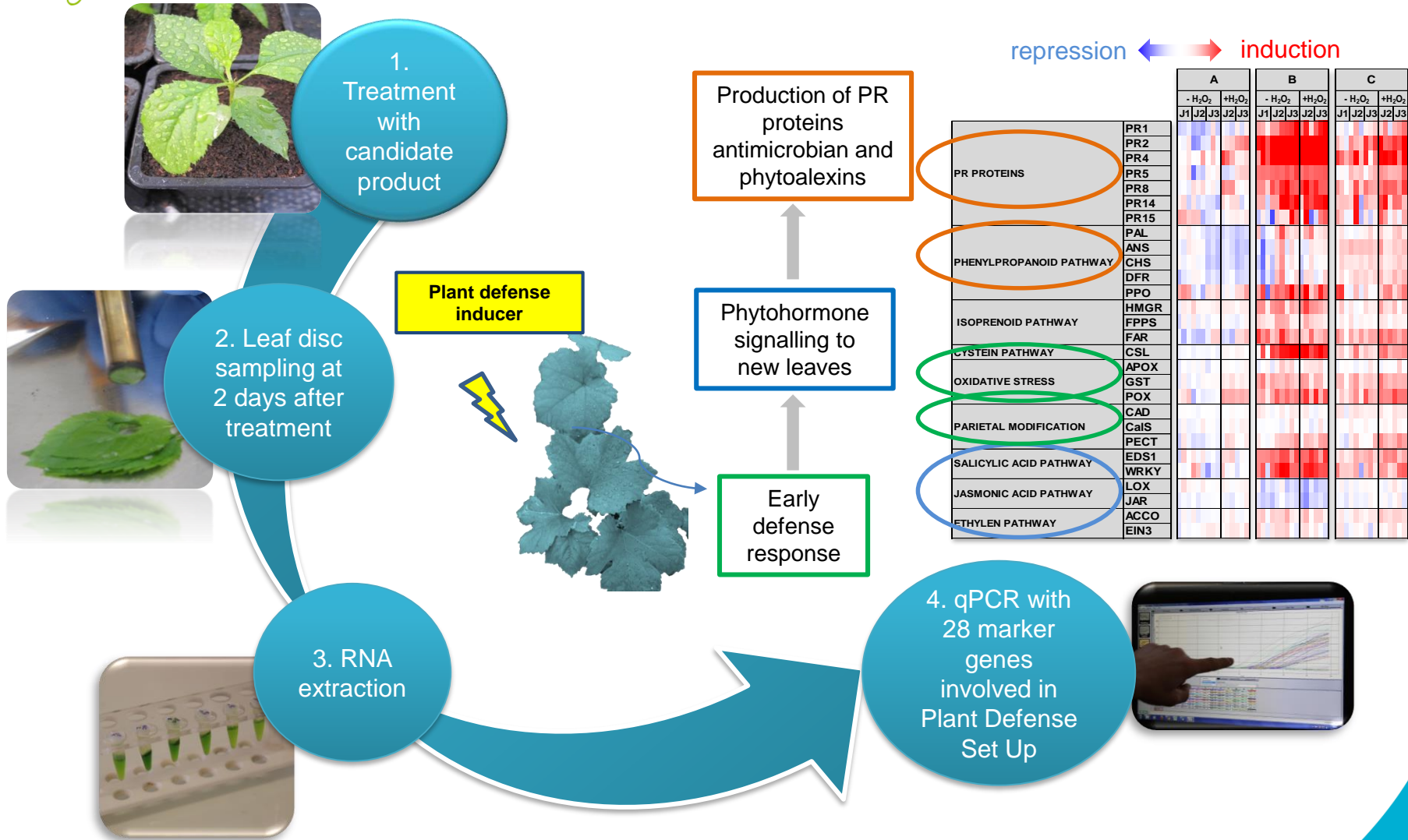
**Protection  
des plantes**

*Plant Protection*

# A field sampling kit to evaluate and confirm plant defense induction by ROMEO in field conditions

Caroline Bonneau  
VEGEPOLYS Centre R&D  
ABIM, 2018

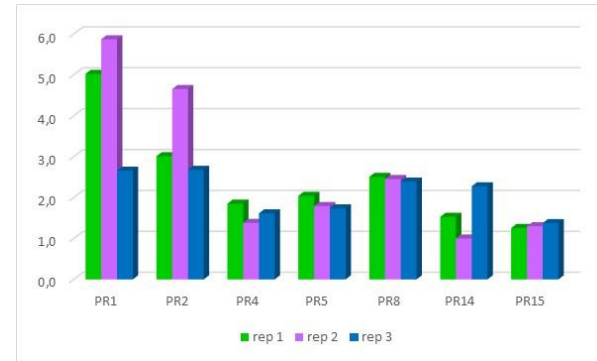
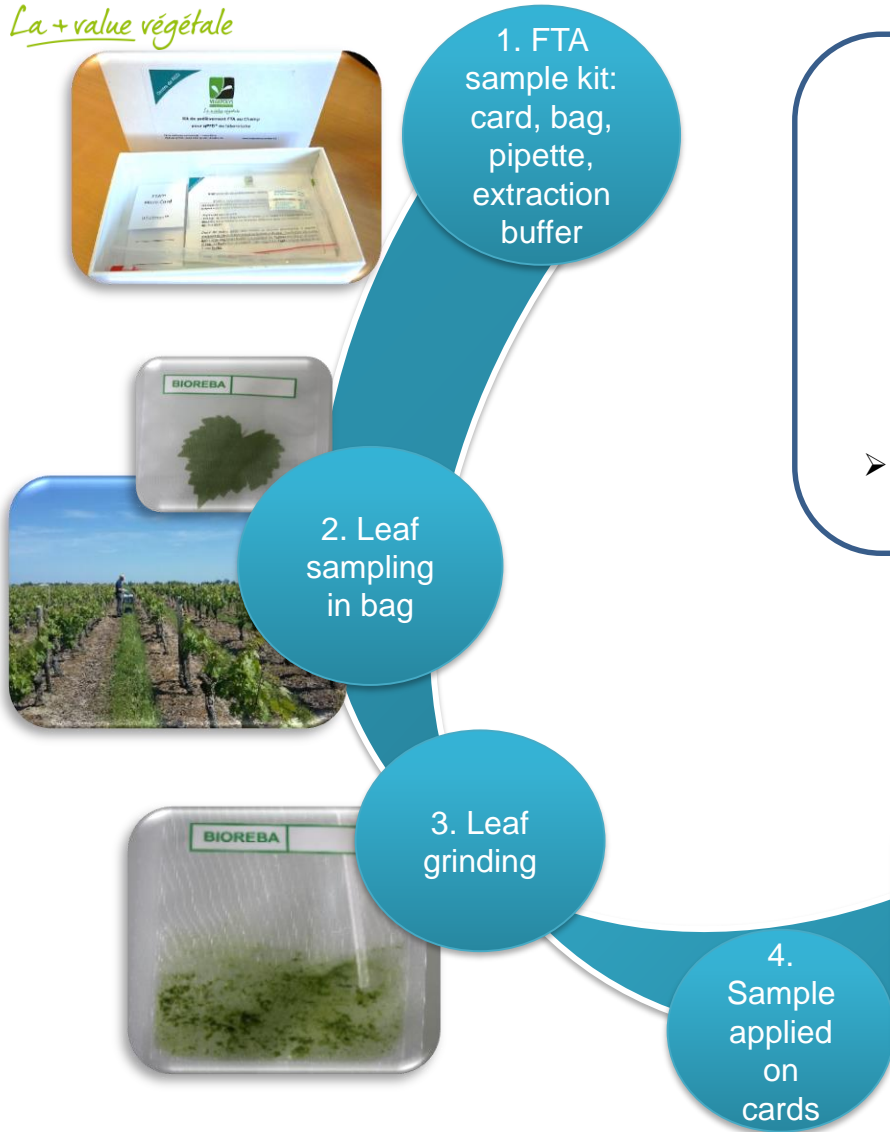
# A qPFD®\* platform to screen plant defense inducers in laboratory



# FTA®\* sampling cards to transport samples from field to laboratory

*La +value végétale*

- Quantitative gene expression



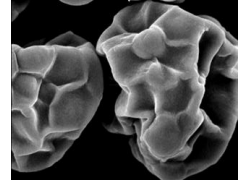
➤ PR Proteins induced : marker genes for the set up of plant defense mechanisms

# Romeo



*La + value végétale*

- Composition: **cerevisane (94,1 % yeast fractions of *S. cerevisiae* strain LAS117)**
- Formulation: WP
- Systemic Resistance Inducer with a preventive action
- Low risk substance, no MRLs
- Suitable for organic farming



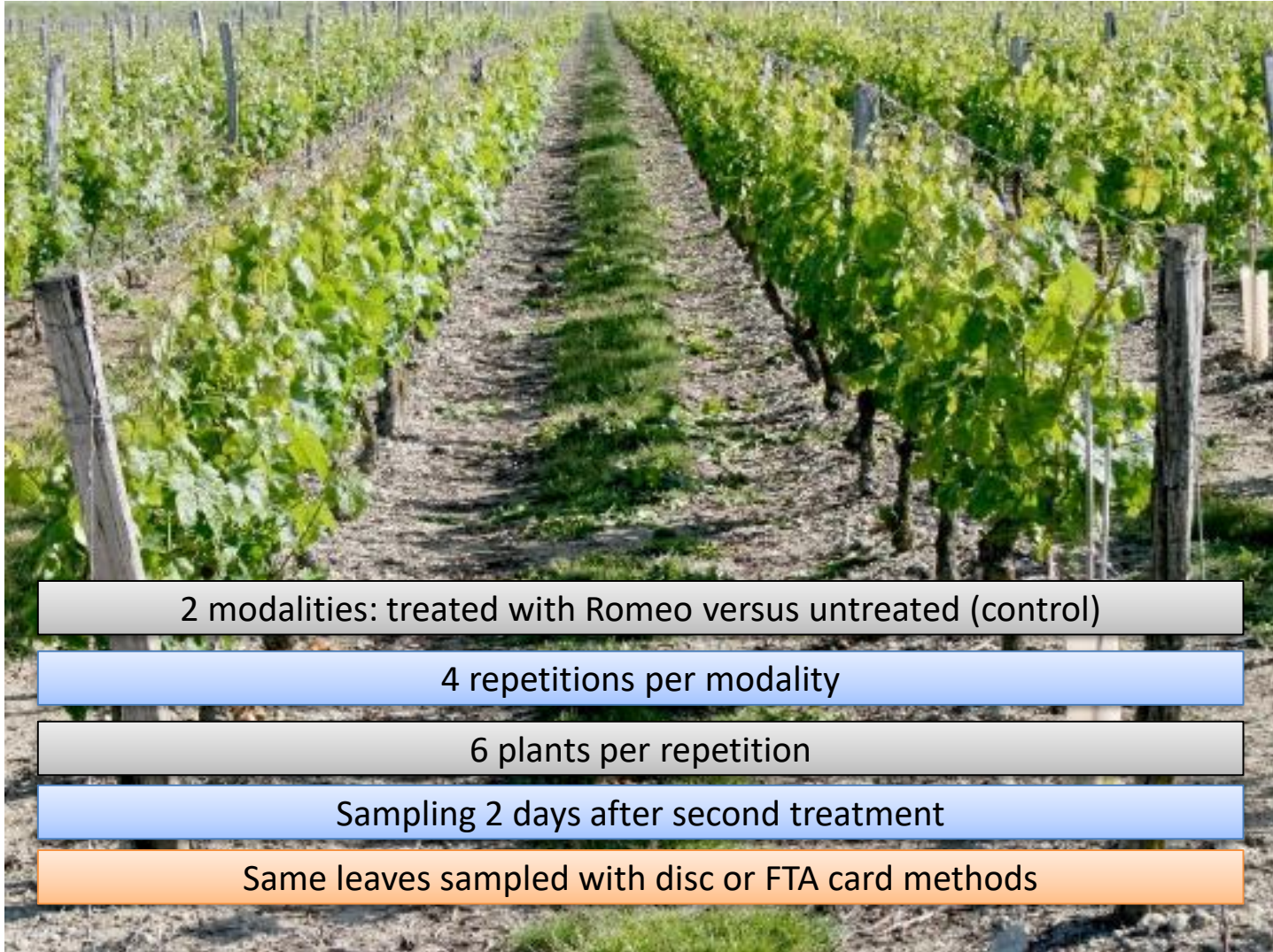
Crop	Uses	Dose/ha	Max appl. /year
Grapes	Powdery and downy mildew	0,25 kg	10
Cucurbits	Powdery mildew	0,5 kg	8
Salad	Downy mildew	0,75 kg	8
Tomato	Botrytis	0,5 kg	8
Strawberry	Botrytis	0,75 kg	8



- Distributed by BASF in France



# Experimental design



2 modalities: treated with Romeo versus untreated (control)

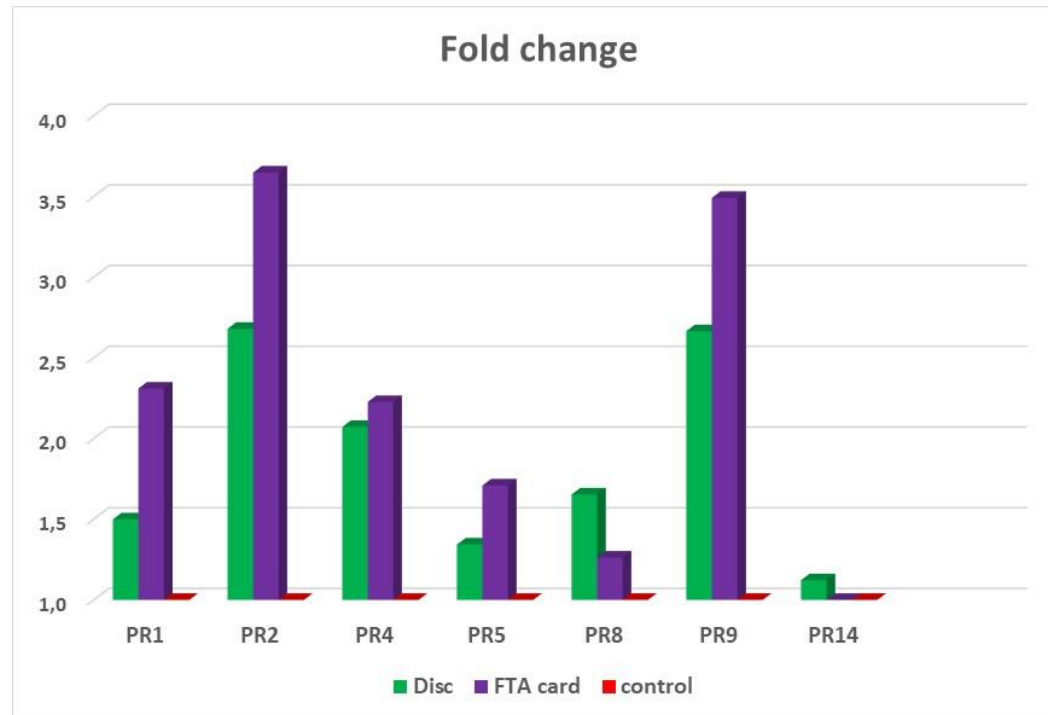
4 repetitions per modality

6 plants per repetition

Sampling 2 days after second treatment

Same leaves sampled with disc or FTA card methods

# Assessment of plant defense induction by Romeo in field conditions



- PR1, PR2, PR4, PR9 genes are induced in plants treated with Romeo



# CONCLUSIONS

- Induction of PR proteins in field conditions after Romeo application
- Combined method qPFD<sup>®</sup>+ FTA<sup>®</sup> card successful to assess PR induction in vineyards

- Available on

