



ENDOSEED™

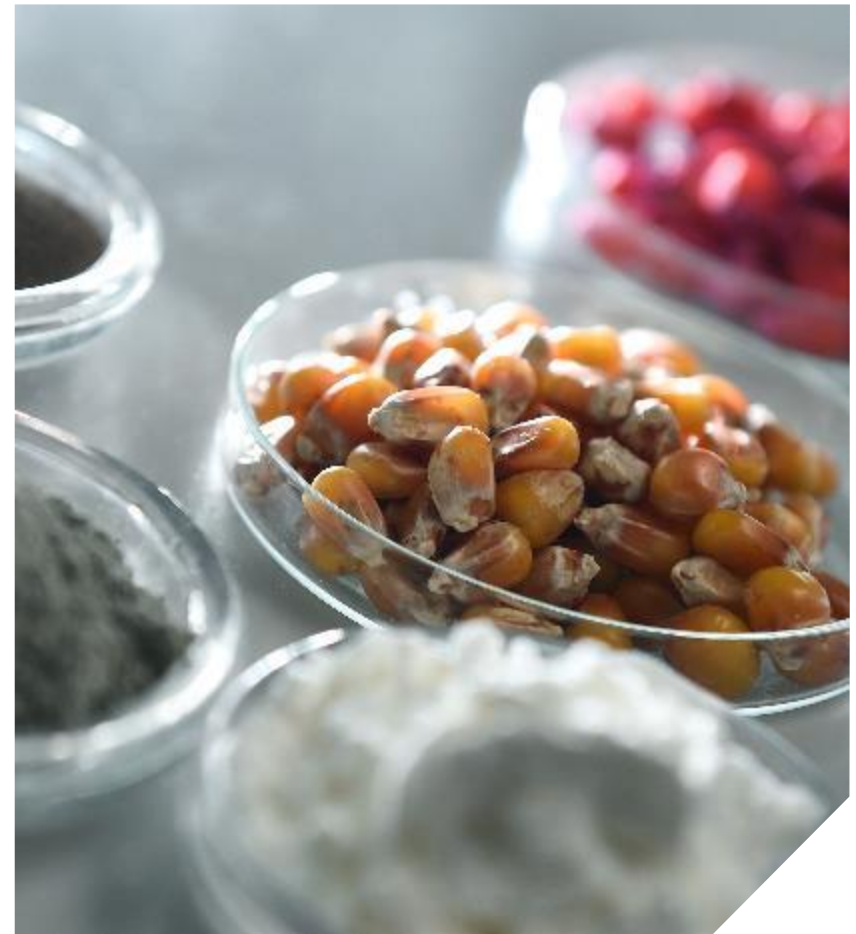
Technologies to generate endophyte improved seed.



MICROBIALS IN AGRICULTURE

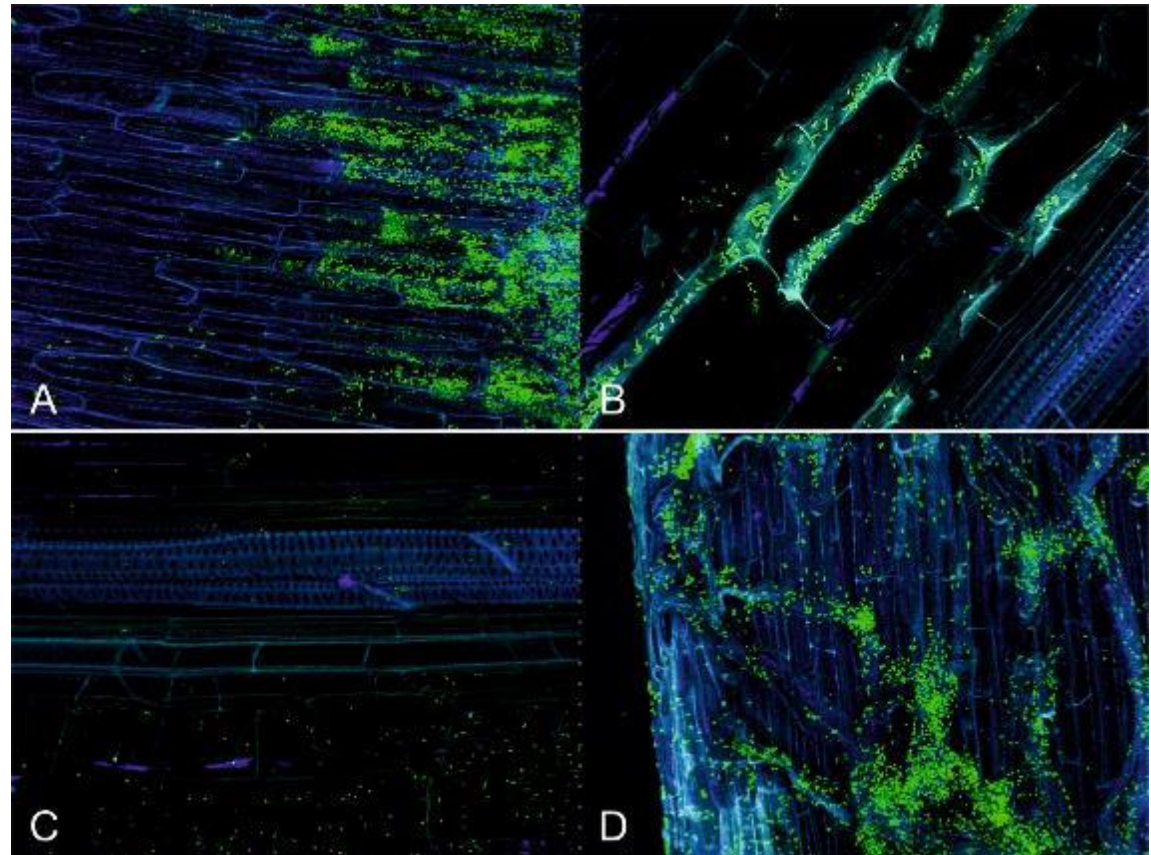
Many strong plant growth promoting bacteria and biocontrol strains are **gram-negative, non-spore formers**.

Sensitive to desiccation and **difficult to stabilize** in seed coatings.



P. phytofirmans PsJN

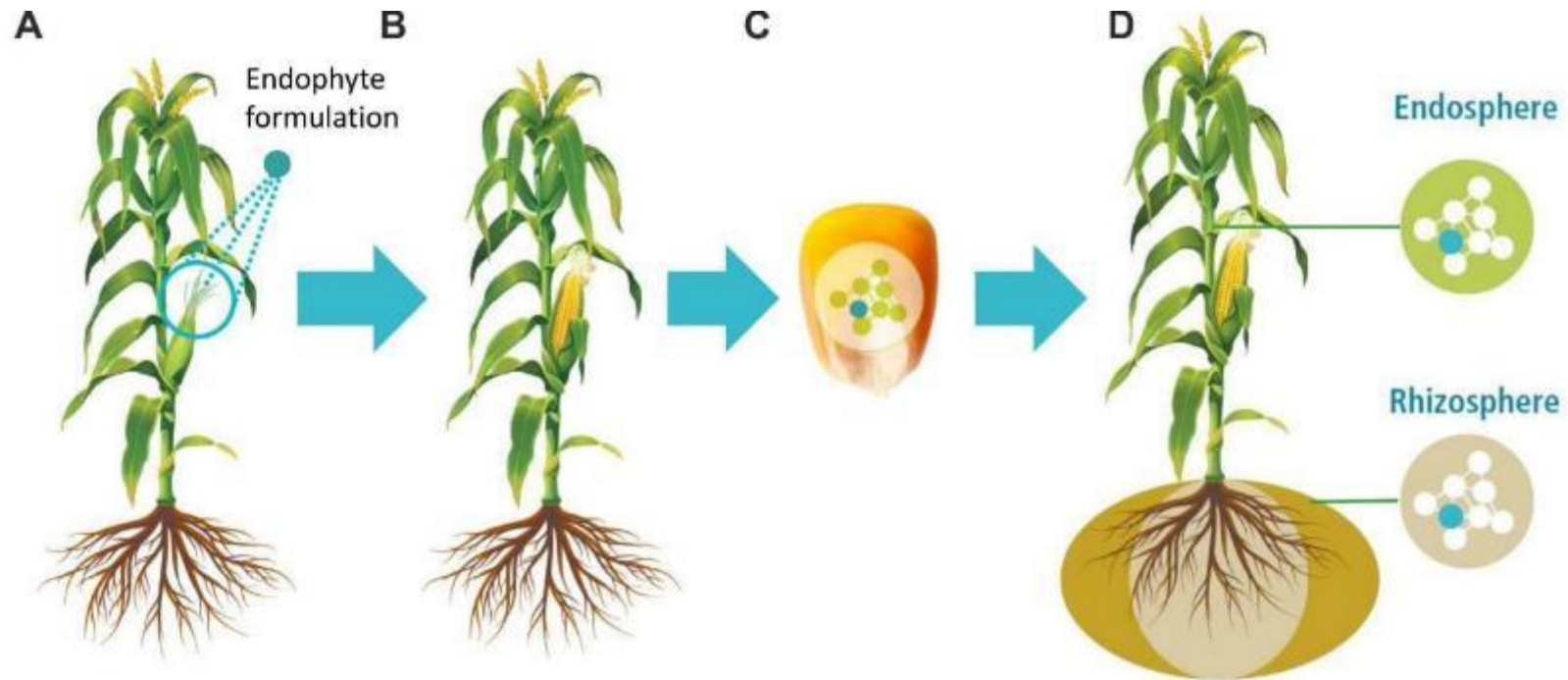
rhizosphere and endophytic populations in a wide variety of plants
 potato, tomato, pepper, tobacco, sugar beed, maize, barley, wheat, grapevine,
 ...



PsJN cells
 colonizing roots of
 corn seedlings

ENDOSEED™

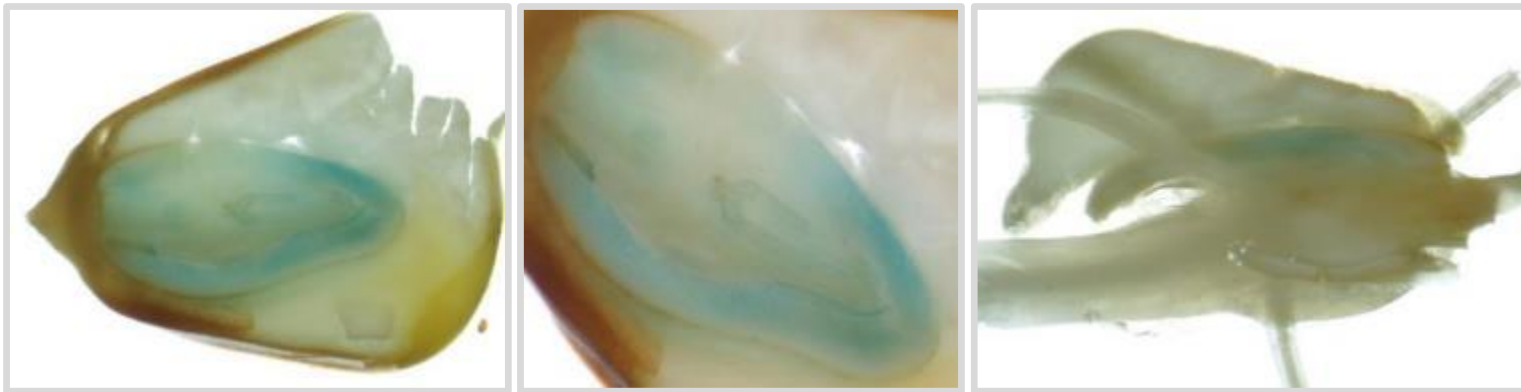
Bacteria colonize seeds upon flower application



ENDOSEED™

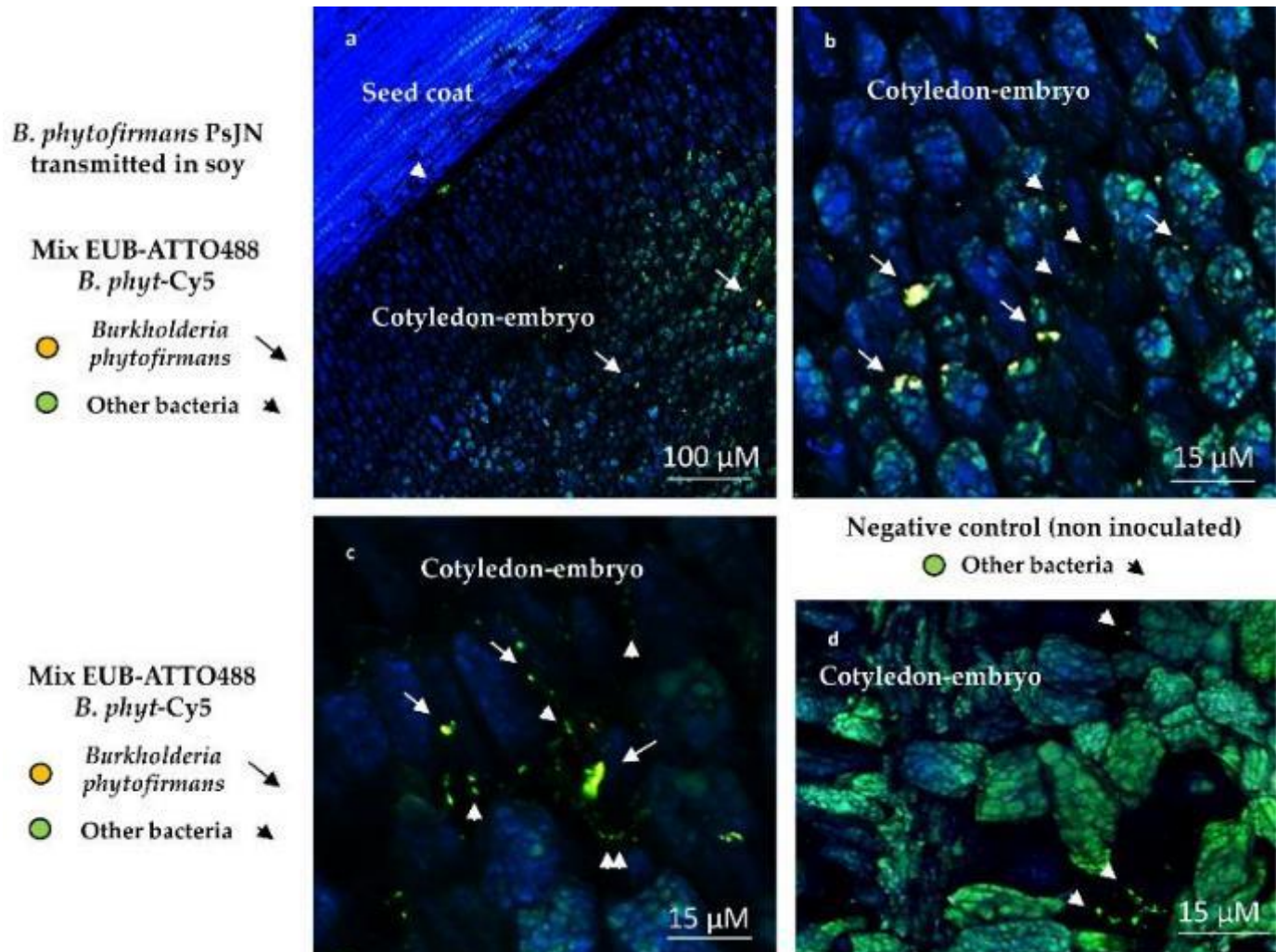
Bacterial cells are located in the seed embryo

Maize (*Zea mays* L.) and *P. phytofirmans* PsJN::gusA



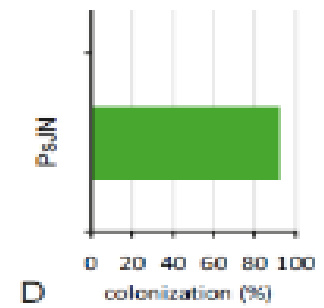
ENDOSEED™

SOY SEEDS WITH P_sJN CELLS INSIDE THE EMBRYO




ENDOSEED™ APPLICATION IN THE FIELD


Spring wheat (*Triticum aestivum* cv. Trappe) and *P. phytofirmans* PsJN

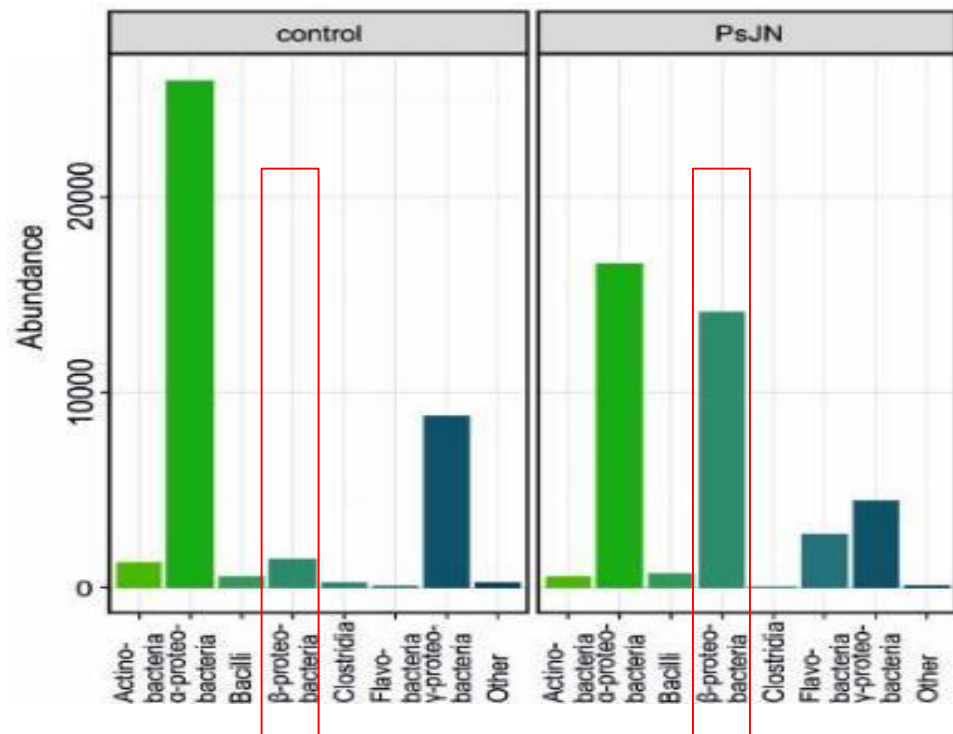


ENDOSEED™ CHANGES IN THE SEED MICROBIOME

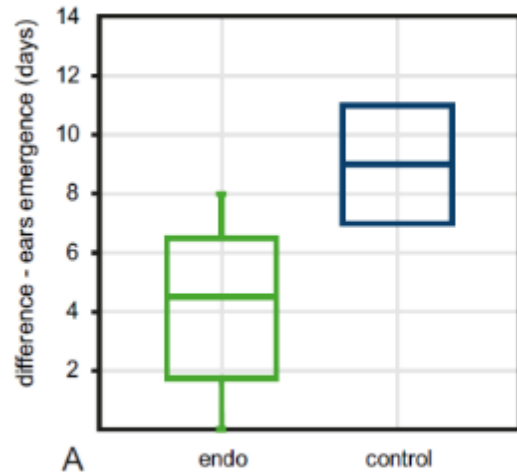
Spring wheat (*Triticum aestivum* cv. Trappe) and *P. phytofirmans* PsJN

 *β-Proteobacteria*
Flavobacteria

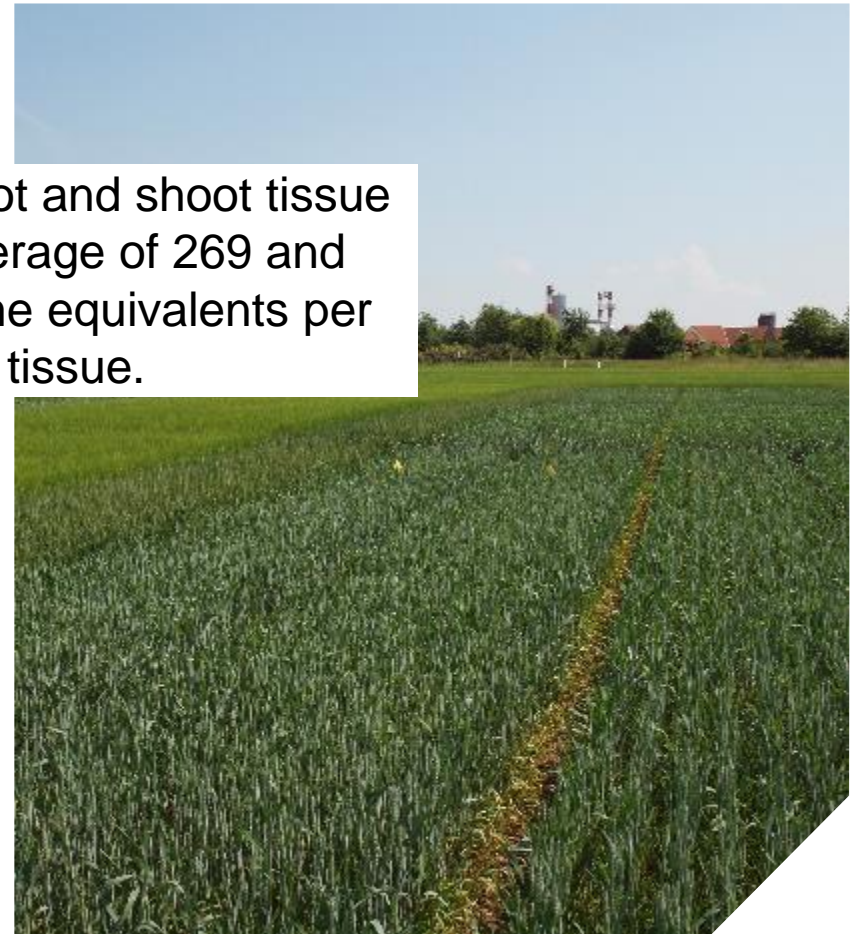
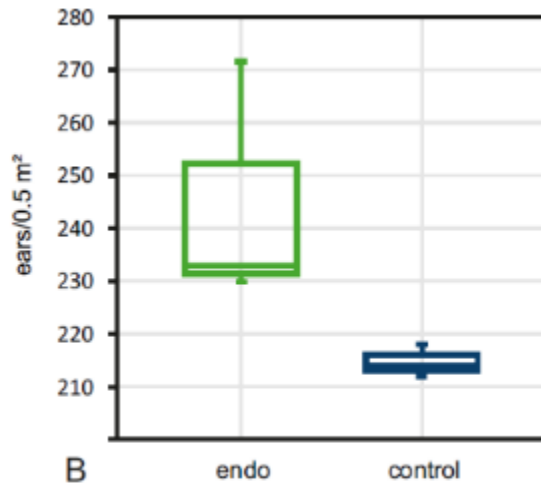
 *α-Proteobacteria*
γ-Proteobacteria



ENDOSEED™ CHANGES IN PLANT TRAITS



PsJN in root and shoot tissue with an average of 269 and 388 genome equivalents per gram plant tissue.



ENDOSEED™

plant reproductive organs as **entry port** for microbes

plant seed as **protective carrier** for microbial inoculants

optimal for **sensitive bacteria**, which are difficult to stabilize on seed



ACKNOWLEDGEMENTS

Austrian Institute of Technology

Nikolaus Pfaffenbichler

Stéphane Compant

Livio Antonielli

Muhammad Naveed

Teresa Berninger

Alexandra Petric

Head of Bioresources

Angela Sessitsch

Indigo Ag

Geoffrey von Maltzahn

Richard Flavell

Yves Millet



THANK YOU!

Birgit Mitter, October 25th, 2017

