

# **New approaches in pest monitoring**

What a daily picture from the trap can tell

Matej Štefančíč

ABIM Basel, 2014

# Time-to-react

7-10 days



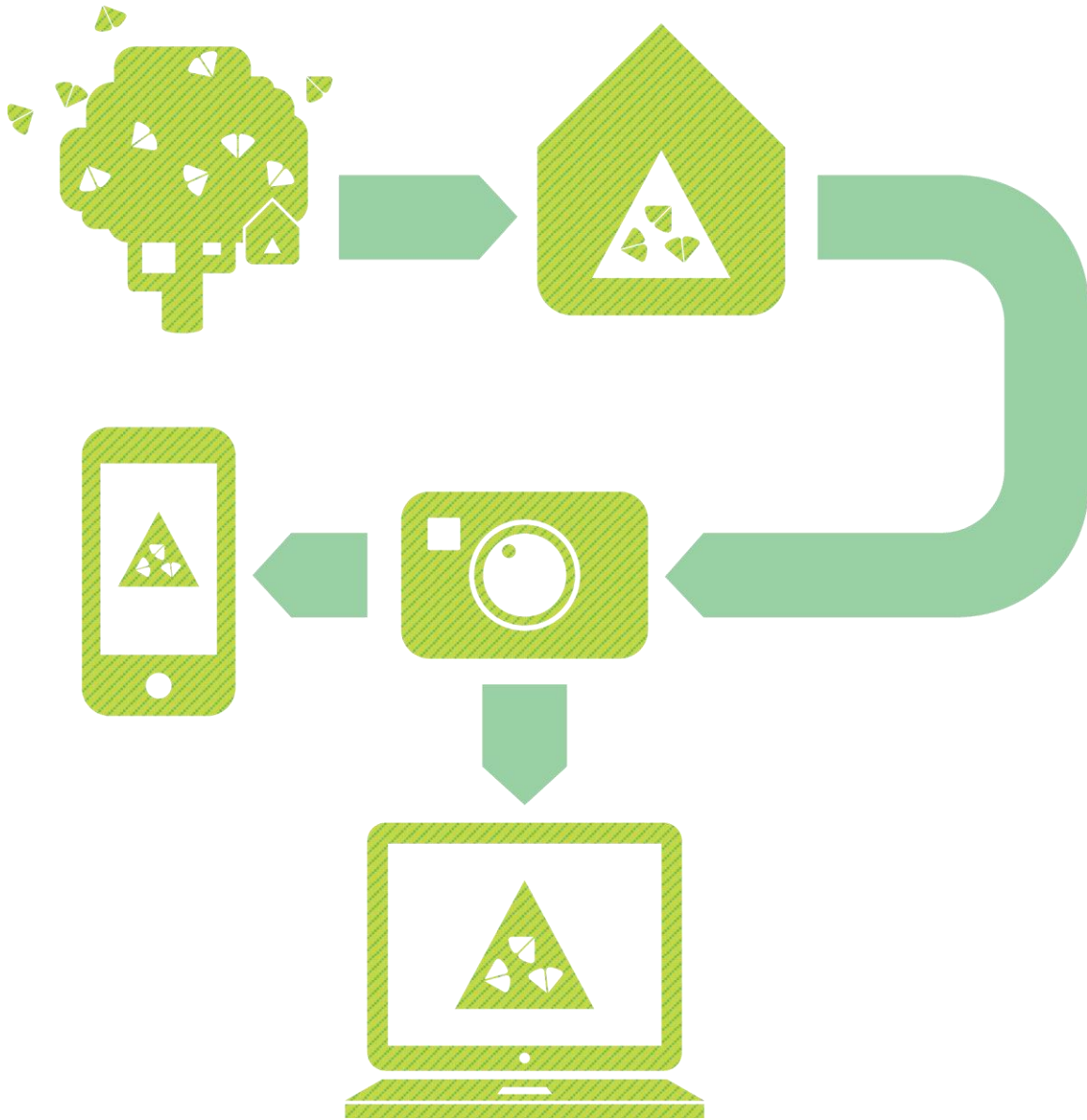
**1 day**

# Travel costs

up to **75%** reduction

# Area not infected (export)







MAP OF DEVICES



SEARCH FOR DEVICES

DEVICES

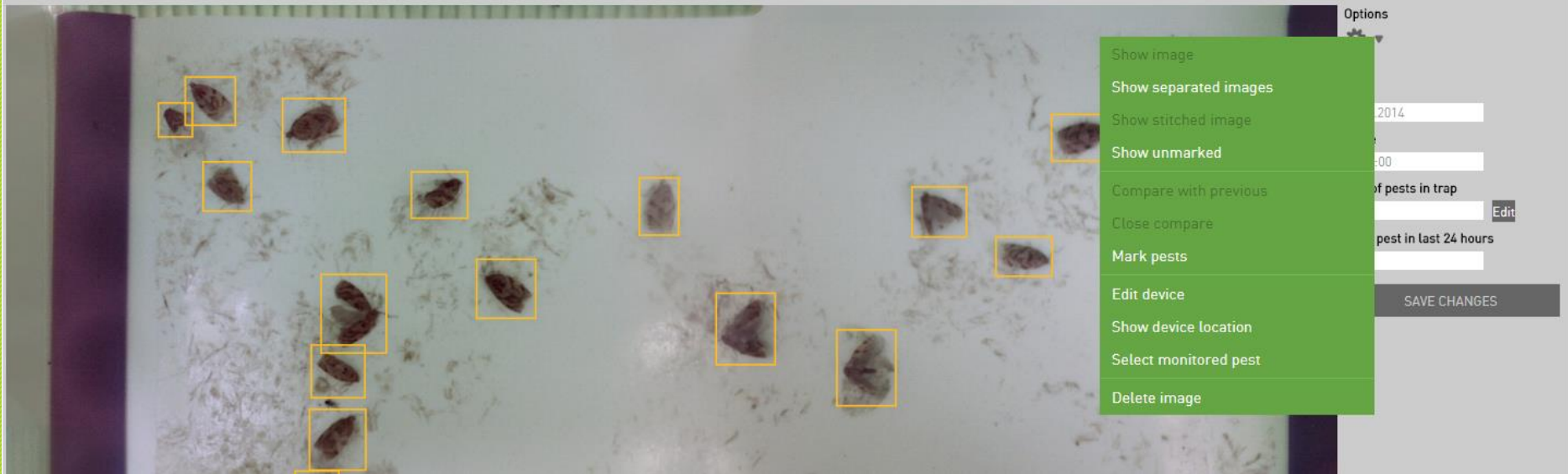
DEVICE NO.	NAME	LAST EVENT
S01267	Razdrto	16.11.2013 03:01:00
S01316	S01316	16.11.2013 02:01:00

IMAGES



Image

Pest chart





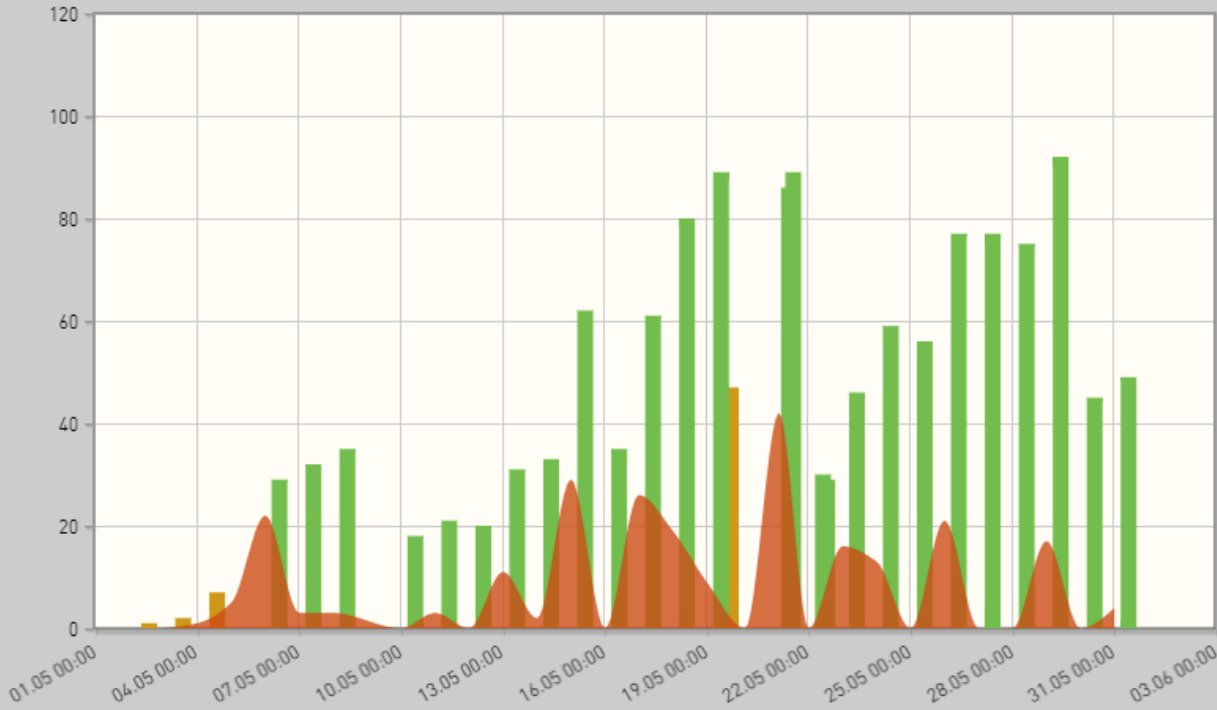


Image

Weather chart

Pest chart

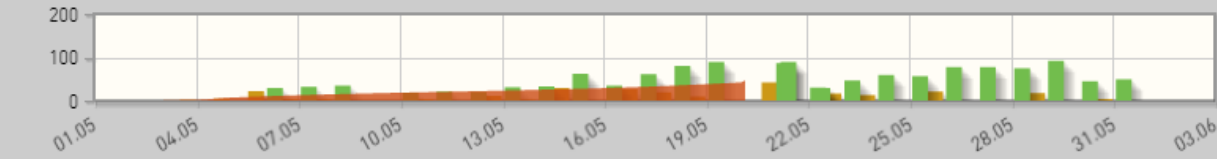
Pest by temperature chart



- Number of pests (unreviewed)
- Number of pests (user reviewed)
- Pest difference (by day)

Data range [dropdown]  
Date from 01.05.2014 to 01.06.2014 [calendar] [calendar] **REFRESH**

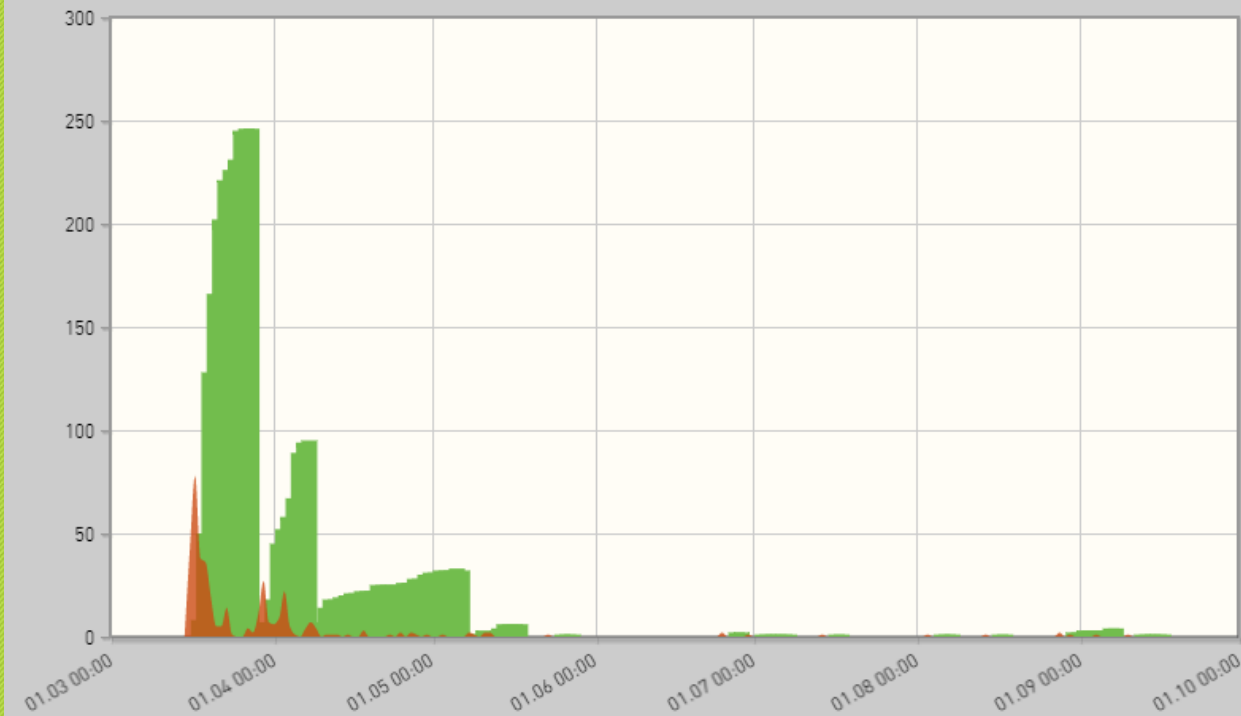
Total new pests in period 246



Show pests table  **CHART EXPORT** **RESET ZOOM**



Image **Pest chart**



- Number of pests (unreviewed)
- Number of pests (user reviewed)
- Pest difference (by day)

Data range    
Date from 15.03.2014 to 15.09.2014

Total new pests in period

Selected event: 26.09.2014 02:01:00



# Worldwide



Used for

multiple **insect species**

multiple **crops**

# Fruits



**Codling moth**  
*(Cydia pomonella)*



**Summer fruit tortrix**  
*(Adoxophyes orana)*



**Peach twig borer**  
*(Anarsia lineatella)*

# Grapes



**European grape vine moth**  
*(Lobesia botrana)*



**European grape berry moth**  
*(Eupoecilia ambiguella)*

# Vegetables



**Potato tuber moth**  
*(Phthorimaea operculella)*



**Diamondback moth**  
*(Plutella xylostella)*



**Tomato leafminer**  
*(Tuta absoluta)*





**Cotton bollworm**  
*(Helicoverpa armigera)*



**Silver Y moth**  
*(Autographa gama)*





European corn borer - female  
(*Ostrinia nubilalis*)



European corn borer - male  
(*Ostrinia nubilalis*)





**Bark beetle**  
*(Ips typographus)*



**Medfly**  
*(Ceratitis capitata)*



**Spotted wing drosophila**  
*(Drosophila suzukii)*

**An extraordinary tool which  
allows me **to be awesome** at  
what I do best.**

**info@trapview.com**

